

Miles Coverdale Primary School Profile

Miles Coverdale Primary School

Coverdale Road

London, W12 8JJ

Telephone: 020 87435847

Children's Service Authority:	Hammersmith and Fulham
Age range:	3-11
Number of pupils:	246
Head teacher:	Mrs Tara Baig
Chair of governors:	Ms Denise Burke

What have been our successes this year?

- The school has a strong identity and ethos. School staff share a commitment to serving the community - expressed and implemented through the Every Child Matters agenda, our Mission Statement and Statement of Aims.
- We are an inclusive school. We strive through our policies, practices and procedures to remove barriers to learning, to raise achievement.
- Our unit is an integral part of the school and an asset in terms of provision for pupils with language impairment.
- We are part of the Excellence in Cities Initiative. Our Learning Mentor works with school staff to address barriers to learning and targets vulnerable pupils.
- School uniform was successfully introduced .
- The Creative Curriculum is vibrant with many cross-curricular links and visits: Royal Opera House, Recycling Event, Black History, Xmas Concert and Fete, projects with the police, Book Week, Chance to Dance & Fashion projects etc. Science and the Foundation Stage curriculum are strengths of the School.
- The School has been featured in local newspapers.
- We have the Active Mark award and all pupils have access to a very wide range of physical

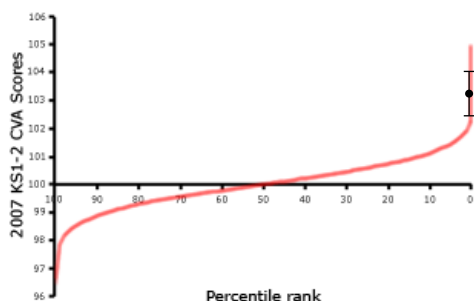
activities.

- Breakfast Club is due to start in the latter half of the Spring Term '09.
- Building projects.
- Increased parental involvement.

What are we trying to improve?

Priorities from SEF and School Improvement Plan 1) Maths across the school and early reading and writing, developing differentiation with emphasis on the use of appropriate intervention programmes and focus groups. 2) Assessment for learning to improve standards, especially for pupils with EAL and special needs. 3) Use medium term (termly) assessment tracking of individual children to determine progress and appropriate differentiation. 4) Improve staff knowledge of the delivery of phonic programmes across the school to improve reading and writing especially at KS1. 5) Broaden the distribution of leadership skills at senior and middle management and also professional development of support staff. 6) Improve communication and involvement with parents and community and the School. 7) Improve extended services provision for children and parents. 8) Improve the security of the School. Building projects to include new KS2 playground and refurbishment of the staff facilities and new Food Technology room. 9) Introduce a school uniform. 10) Establish a Travel Plan.

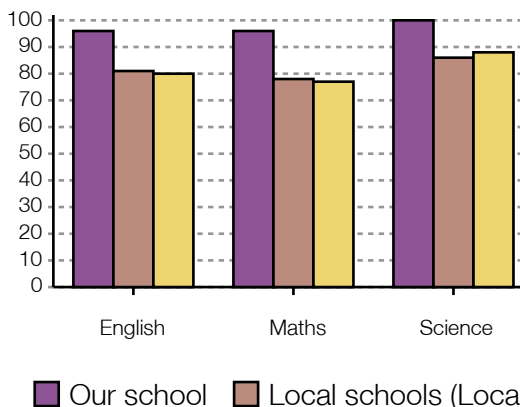
How much progress do pupils make between age 7 and 11?



- Our school
- I Confidence interval

The chart shows our school's contextual value added (CVA) score relative to that of other primary schools. CVA is a statistical means of assessing how effective a school is, by measuring pupils' progress using their test and examination results. The confidence interval shows the range within which we can be confident the score (calculated on the results of only one year group) represents the overall effectiveness of a school. The percentile rank shows the percentage of schools with a score equal to or higher than ours.

How well do pupils achieve at age 11?



This chart shows the Key Stage 2 results for 2007. It indicates the percentage of pupils eligible for KS2 tests (usually 11 year olds) who achieved or exceeded the expected level (level 4)

ENGLISH KS2-2008

NUMBER OF YR 6 PUPILS	TARGET	RESULT LEVEL 4+	RESULT LEVEL 5
25	64%	80%	16%

MATHS KS2- 2008

NUMBER OF YR 6 PUPILS	TARGET	RESULT LEVEL 4+	RESULT LEVEL 5
25	72%	48%	16%

There were 25 pupils eligible for the KS2 assessment. 5 (20%) of these pupils were with Special Educational Needs at School Action Plus or with statements. There were 3 children (12%) at School Action.

Contextual Value Added Measure from KS1 to KS2 is 100.5, which is average progress.

How are we working with parents and the community?

- Parent governors: We have 3 more parents now who have joined the Governing Body.
- New Parents' Focus group.
- Parents have been invited to School events- opening ceremony of the new KS1 playground, Black History Event, Christmas Concert and Fete, Book Week where parents have led storytelling sessions in their native languages.
- Surveys and meetings have been carried out to ascertain parental involvement, including parents' classes.
- Parents have been involved in volunteer classroom work to gain work experience for NVQ qualifications.
- Parents' evenings are held termly and newsletters sent out termly.
- A schoolwebsite is being developed.
- We participate in the LBHF Sports and Music Strategies.
- We use resources in the locality and support local initiatives: Shepherds Bush Library; the Lyric Theatre; Ravenscourt Park; the Urban Studies Centre. Provision in school is supported by structured police visits and Junior Citizenship.
- We build on and broaden cultural experiences: the Royal Opera House for ballet and opera; the Royal Academy of Arts and National Gallery; performances and follow-up workshops by the National Theatre and Lyric Theatre.
- The Creative Curriculum- there have been a wide range of workshops and visits.

How do we make sure our pupils are healthy, safe and well-supported?

Physical Exercise

- The majority of pupils walk to school and to off-site venues.
- The Sports'Coach works with all ages for the curriculum, clubs and sporting events.
- Out-door provision for Foundation Stage is good.
- We have achieved the Active Mark for exceeding the 2 hour physical activity provision. Foundation and KS1 pupils use our learner pool for swimming and KS2 pupils have swimming lessons off-site.
- Participation in the LBHF's Sports Strategy .

- Clubs offered include football, basketball, dance,cricket.
- Speciaist coaches including skittleball , cricket , tennis and basketball.
- Through PE lessons, Science and PSCHE, learners understand the importance of physical exercise.

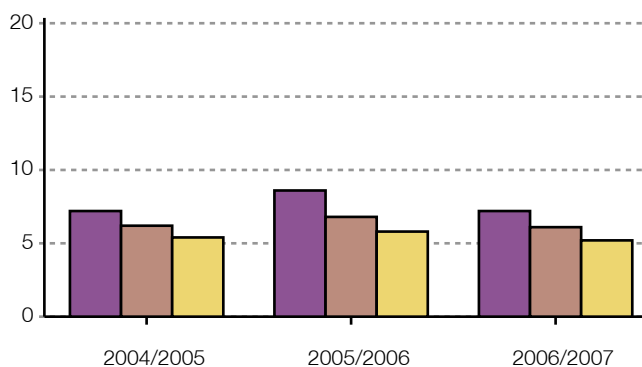
Nutrition

- All dietary needs, both religious and medical, are met. Healthy packed lunches are encouraged.
- To ensure that dining is a pleasant and social experience, we have 3 sittings.
- We participate in the National Fruit Scheme.
- We encourage drinking water regularly.
- New Food Technology room.
- Health checks by the school nurse.

Policies and Procedures

- Policies include SEN,Positive Behaviour,Child Protection, Disability access and internet safety.
- Learning Mentor and Integrative Arts Psychotherapist support our vunerable and SEN children.

How do our absence rates compare with other schools?



This chart shows the percentage of half days missed through authorised and unauthorised absence by all pupils at the school. Information is given for the school, for schools within the local authority and for all schools.

Our school
 Local schools (Local Authority)
 All schools

What activities and options are available to pupils?

- We build on home and cultural experiences. See performances, participate and perform in events : Royal Opera House, Lyric Theatre; Gifted and Talented UN Conference; National Theatre, Royal Academy of Arts and Workshops.
- Opportunities for dance are extended through whole school events and celebrations: religious, Black History Month, Book Week. Royal Ballet's Chance to Dance scheme which has led to a number of pupils being selected for tuition in ballet. After school dance club and the pupils take part in LEA dance competitions.
- LEA's Music Strategy: recorder tuition. Provision for music also includes steel pans tuition. There is a guitar club and more music/singing lessons.
- LEA's Sports Strategy. Inter-school events - the Mayor's Cup for Football, the Skittleball Championship, Inter-School Indoor Athletics, Inter-School Sports, Gifted and Talented Events. Coaching in tennis, football, basketball and cricket. Clubs: Football, basketball, cricket and dance and chess.
- We use the Shepherds Bush Library; the Lyric Theatre; Ravenscourt Park; the Urban Studies Centre and the Wetlands Centre. Structured police visits and Junior Citizenship.
- Visits and workshops are organised around the topics being studied.

What have we done in response to Ofsted?

The most recent inspection was in March 2007. There were two areas for improvement noted in the report:

1. Ensure that pupils make good progress in science in Key Stage 2 . In 2009, 96% Yr 6 achieved level 4 and above. In '07, 100% of the Yr 6 pupils attained level 4 or above and the CVA for the subject was 103.3. In Year 2, 87% attained level 2 or above. Recent planning evaluation and book looks show that science is taught effectively at the end of each Key Stage, however the standards across the school need to reach the level of the best. As such, the teaching of investigative science will be a SIP priority in 2008 - 9.

2. Improve the recruitment and retention of teachers so that the teaching and progress in each class is at least good. Staffing has been stable since April 2007. Lesson observations in maths and English in 2007 - 8 have shown that the majority of lessons are judged to be good or very good. An extensive review of staffing will take place in the Summer Term 2008 in order to ensure that each teacher is working in a context which utilises their strengths. Retention of teachers is supported by effective performance management focused on career development and more focused CPD to ensure personalised professional development.

More Information

If you would like more information about school policies, including our policies on special educational needs and disability, admissions, finance, school food and our complaints procedure, please contact us:

By telephone 020 87435847

Our website
